



nik Color Efex Pro![™]



User Guide

More from nik multimedia!

Interested in adding additional creative power to Photoshop® and other Adobe® Plug-in compatible programs? Check out some of the other nik multimedia products available.

nik Efex! - Use nik Efex within Photoshop® to create unique, high-resolution, masked, CMYK separated images with just a single mouse-click! Use color, style, frames, 3D text and other actions to create endless combinations - 126 effects in all!

nik Type Efex! - Create stunning CMYK separated 3D text effects in a single mouse-click. Utilize the 205 professional actions to create fully masked, high resolution CMYK-EPS files ready to place in your layout.

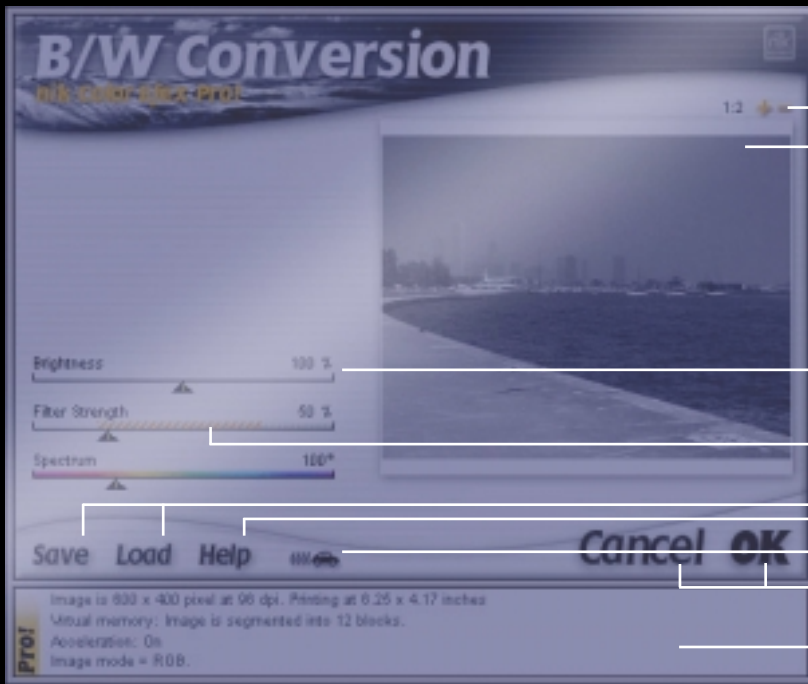
nik Sharpener! - Take the guesswork out of sharpening with nik multimedia's 100% Adobe compatible plug-in. nik Sharpener enhances and simplifies the process of sharpening images. Sharpen in RGB mode and prepare images for inkjet, color laser and offset printing.

nik Sharpener Pro! - Sharpen all of your

images optimally and consistently with nik Sharpener Pro! Add multiple detail and color protection processes to sharpening while using familiar and easy-to-determine variables to sharpen your images. Work in RGB, CMYK, Grayscale or Lab modes, and utilize a proprietary Autoscan process, enabling sharpening based on the individual image's quality and characteristics. Sharpen images for all types of output using sharpeners ranging from the Internet Image Sharpener to an adjustable lpi Offset/Autoscan Sharpener.



Quick Reference



Zoom in / Zoom out

Preview Area

Filter Slider

Optimal Range

Save and Load Settings

Access Help Pages

Accelerated Mode On/Off

Abort / Confirm Dialog

Advanced Information

Table of Contents

Welcome to nik Color Efex Pro!	4
Installing nik Color Efex Pro!	5
A Sample Application of nik Color Efex Pro!	7
Using nik Color Efex Pro!	10
Advanced Color Treatment - RGB, CMYK & Lab	12
Filter index by name	14
Filter index by filter symbol	15
nik Color Efex Pro! Overview	16
nik Abstract Efex Pro!	50



(Der Deutsche Teil des Handbuchs beginnt auf Seite 61)



Welcome to nik Color Efex Pro!

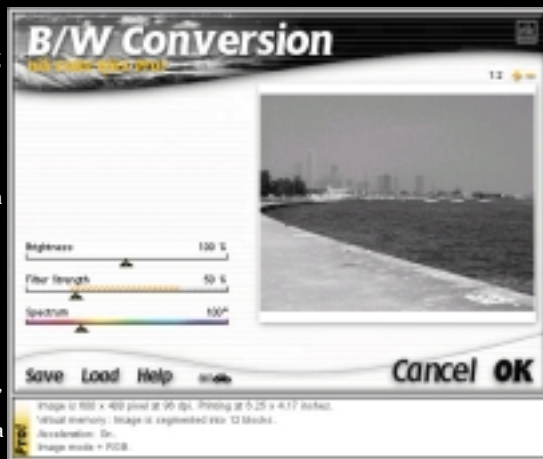
nik Color Efex Pro is a collection of digital filters created specifically for graphic design and photographic professionals. Operating under any 100% Adobe plug-in compatible program, nik Color Efex Pro provides color, light and stylizing effects and features that make enhancing images and creating powerful effects easy.

nik Color Efex Pro includes a number of features not offered in the standard version of Color Efex, including CMYK compatibility, Save and Load features, a detailed Text Output Area for the current image, advanced color treatment, and much more. nik Color Efex Pro also provides you with an additional 21 filters (55 filters in all) that include added adjustments, providing greater control for enhancing and stylizing your image.

Navigating the nik Color Efex Pro filters is easy whether or not you are familiar with Photoshop or any other plug-in standard compatible program. Once you have installed nik Color Efex Pro into your image editing software (see installation on pages 5 & 6) and have opened an image and selected a filter, you are provided with a series of sliders. These sliders control the individual adjustment within

the filter and allow you to make changes to your image.

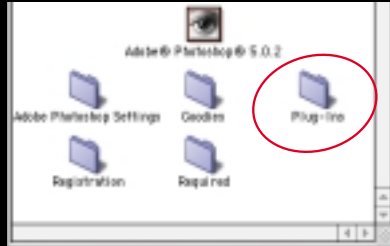
While this booklet is a good place to start, nothing compares to diving in and experimenting with nik Color Efex Pro. Trying a number of different filter combinations for each image is the best way to discover the great potential of the program. Read the booklet or browse through it, but keep the booklet handy as a reference. However, if you have a quick question when using a filter, we have integrated individual filter help screens that can be accessed by clicking on the Help button. These screens will provide you with a convenient way to access basic information on each filter's adjustments.



Installing nik Color Efex Pro!

1. Installing nik Color Efex Pro is simple. Place the nik Color Efex Pro CD in your CD-ROM drive and find the folder "the Filters."

2. Locate the Photoshop folder on your computer. You will want to put nik Color Efex Pro in the filters folder where you have installed Photoshop. If you are installing nik Color Efex Pro for use with another Adobe-compatible program, be sure to check the documentation for instructions on properly installing filters.



You may want to check our web site at www.tech-nik.com for compatibility updates. We cannot provide support for

host programs, but we will do our best to answer your installation questions.

If you are not sure where your filters are installed in Photoshop, follow these simple steps.

a) Open Photoshop and from the file menu, select Preferences "Plug-Ins & Scratch Disks." The location of your plug-ins will appear.

b) Next, click the Choose button/option to locate the filters folder and scroll through the folders, checking for your folder named "Filters".

c) Note the location of your filters folder and close the Preferences dialog box by selecting "Cancel".

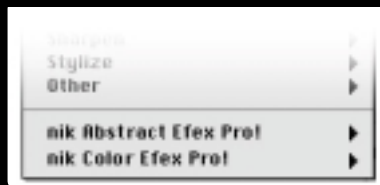
d) Close Photoshop before proceeding with installing nik Color Efex Pro!

e) Copy the folder "the Filters" from the nik Color Efex Pro CD-ROM with one mouse drag into the "Filters" folder you determined in step c.

3. Launch Photoshop and select the Filter menu (in Photoshop). There you will find two new submenus: nik Color Efex Pro! and nik Abstract Efex Pro!

nik Color Efex Pro contains all of the image optimizing and conventional stylizing tools in the collection. A separate menu item will also appear for the nik Abstract Efex Pro effects. This separate menu item contains the more stylistic and abstract effects that modify the image in a more dramatic fashion.

If nik Color Efex Pro does not appear in the Filters menu, you may have copied the filter folder from the CD to the wrong location on your computer. If this happens, check to see if you have more than one copy of Photoshop installed or if you selected a different folder location when installing Photoshop. Return to step 2 a) and check the "Filters" folder location again and ensure that nik Color Efex Pro is installed in this folder. You may also want to check to be sure that you have not installed nik Color Efex Pro in the "Extensions" folder, often located one folder up from the "Filters" folder.





A Sample Application of nik Color Efex Pro!

Before you begin experimenting with the various filters, follow this sample application of nik Color Efex Pro! We have included this multi-step demonstration to show how the filters can be used together. Note that many enhancements that you will typically make can be made with only one or two filters. This demonstration, however, applies more filters than a typical photo may need to enhance an image. The photo in this demonstration is a bit plain, and was chosen to demonstrate the potential for adjustments of color, light and contrast that can be applied easily using nik Color Efex Pro! As you continue thumbing through the book, you will find varying types of photos with enhancements that are more common and usually require only one or two filters for optimal enhancements.

The photo to the left was taken on a beach on a typical overcast beach day. It doesn't seem to have much potential; however, in this demonstration we transform the image by applying five filters: Graduated Blue 201h, Graduated Blue 220h, the Red Contrast, the Sunshine and the Lighten Center filter.

Step 1)

The Graduated 201h (Sky Blue) Filter

The Graduated 201h (Sky Blue) Filter corrects the overexposed sky, a common problem where exposure is set using a foreground reading.

Graduated 201h (Sky Blue) Filter inks the upper area of the image with blue, re-saturating the sky and darkening it a little. Landscapes in which top and bottom exposures are close are easier and more pleasant to view. By darkening the sky you can compensate for a scene pho-



tographed against the sun or one photographed with bad light, balancing the light and contrast in the image after you've taken the photo.

Step 2)

The Graduated 220h (Blue) Filter

This filter applies a very saturated, subtle blue. When applied alone, the effect is unrealistic. Applied at a low value it complements the Graduated 201h (Sky Blue).



Step 3)

The Contrast Red Filter

Application of the Contrast Red Filter adds contrast to the image, heightening the detail of the beach.



(Original image)



Step 4)

The Sunshine Filter

The most revolutionary filter of the series, the Sunshine Filter, uses a completely new series of light-casting algorithms capable of creating the illusion of sunlight in images that



were taken with little or no sunlight. You see no specific light source, yet the effect is a brighter image

Step 6)

The Lighten Center Filter

Finally, application of the Lighten Center filter draws the eye to the center of the image while creating greater depth. With darker borders and a brighter center the image is more dramatic, more inviting, and more pleasant to look at.

(final image)



Using nik Color Efex Pro!

This section describes the features of nik Color Efex Pro and provides a brief introduction to using the program. This booklet does not cover topics related to using your image-editing software, but rather focuses on using the features of nik Color Efex Pro and applying nik Color Efex Pro filters. To get started with nik Color Efex Pro:

- 1) Open an image within Photoshop (or any other compatible application).
- 2) Open one of the nik Color Efex Pro filters from the appropriate Filters or Effects menu in your image editing software.
- 3) Experiment with the sliders until you find a suitable setting for the image and apply the changes by selecting OK. If you make changes on the screen that you do not wish to apply to your image, simply click the Cancel button.

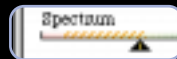
Color Mode: You can apply any of the nik Color Efex Pro filters to images in grayscale, RGB, Lab and CMYK color mode. However, using filters in grayscale mode is not appropriate as most of the filters and their features operate using color information from the image.

Preview Area and Zoom Feature:
The preview area is the area in the upper

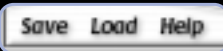
right corner of the screen and shows the effects of your filter adjustments before they are applied to the image. When opening the image, this area will show the entire image. You can adjust the zoom level of the preview by clicking on the plus or minus symbol. You can also scroll in this preview area by clicking and holding down the mouse button and moving the mouse, dragging the image to the area that you want visible in the preview window.



Sliders: The parameters of the nik Color Efex Pro filters are set by moving the small triangular sliders for each setting. In many cases, the optimal ranges of adjustment are marked by an orange-striped area on the slider. Nevertheless, this does NOT mean that other settings will lead to unacceptable or undesirable results. Use these optimal range settings only as a guide in setting the sliders. To enter the slider values using the keyboard, press the Enter/Return key and enter the value for the first slider. Hit the Enter/Return key to move on to the next slider.



Save and Load: The Save and Load feature allows you to save filter parameter settings to disk and load them at a later time. The Load feature allows you to recall any of the previously saved settings and apply them to an image.



Help: The Help button opens a series of help dialog boxes for the current filter. These dialog boxes provide basic information on the current filter and its adjustments.

The Acceleration Button: The Acceleration Button controls the Accelerated Mode for nik Color Efex Pro, indicated by a small car in the lower portion of the filter dialog



box. Clicking on this icon toggles between "Normal Mode" (represented by two speed bars) and "Accelerated Mode" (represented by four speed bars). The Normal Mode is the default and the recommended setting. However, nik Color Efex Pro provides an option for faster processing with minimal loss of quality. Selecting the Accelerated Mode allows the program to run faster, but performs fewer of the more complicated calculations. The effect of the Accelerated Mode is more apparent in some images more so than others. For high-quality images and processing, we recommend using the Normal Mode setting.

The Text Output Area: The Text Output Area of nik Color Efex Pro provides useful information about the current image. Located at the bottom portion of the dialog box, this section provides information related to the image, such as its dimensions and color mode, as well as other filter settings and memory warnings. Line four of the Text Output Area alerts you if there is insufficient memory to process the image.

Preview Hint: The preview area is recalculated each time an adjustment is made to the image. To see the changes as they occur, drag the adjustment slider with the right mouse button (Win) or by holding down the "alt" key (Mac) while making the adjustment. Making changes this way will update the preview window as you make them.

Advanced Color Treatment - RGB, CMYK & Lab

If you have any experience using different color modes, you will know that this is a somewhat complex section. Actually, it is too complex to be explained here in its entirety, so we'll keep this as brief as possible.

Most users think that working with CMYK images directly during image optimization will improve the final printing quality. *This is not true.* The reason is simple. While clear, mathematical color rules exist for RGB, CMYK is different. For example, in CMYK as cyan is printed below yellow, it is treated such that it needs to be a little stronger than yellow. This means that a pure gray in CMYK consists of more cyan than yellow and magenta. Increasing the saturation of gray in CMYK will lead to a saturated blue, unlike in RGB where gray stays gray. An RGB image can actually contain more colors than CMYK, and therefore you lose little, if any, quality when you enhance, sharpen, remove scratches from an image in RGB and then convert it to CMYK directly before print. However, nik Color Efex Pro utilizes a new color treatment method that treats RGB, CMYK and Lab images exactly the same way through a series of calculations. This advanced color treatment ensures that when applying a nik Color Efex Pro filter to a CMYK or Lab image, you can be absolutely certain that color treatment is optimized when working with either RGB, CMYK or Lab images.



Applying the same effect (such as increasing the saturation) to an image with normal color treatment leads to different results in different color modes.



*Using nik Color Efex Pro,
images and their colors are
processed the same everytime,
regardless of the color mode that
you are using.*

In the first three samples (located to the far left) you see three images, one in RGB, the next in CMYK, and the third in Lab mode. In each of these images, the saturation was increased using Photoshop. The results are clearly different, illustrating the significant differences in the normal processing of images in the individual color modes. The advanced color treatment in nik Color Efex Pro addresses this and moderates these differences, actually maintaining color integrity. As you can see in the images on this page, using the nik Color Efex Pro advanced color treatment, the colors are the same in each color mode, avoiding color variations and irregularities between color modes.

When processing CMYK and Lab images in nik Color Efex Pro you may notice longer processing time. This difference in processing time is due to the fact that numerous color treatment calculations need to be made to ensure consistent color treatment. If processing time is a great concern, you can process the image in RGB mode and later convert it to CMYK.

Filter Index by name

This page provides an alphabetical index of the filters in nik Color Efex Pro. On the following page we have included a photographer's index of filters that uses small glass filter icons to identify filters that may be familiar to those experienced in photography. The index on page 15 is designed to be a quick visual index of the more common filters for those users who are used to conventional photographic filters.

nik Color Efex Pro!

B/W Conversion	16
Bicolor Filter: Brown	27
Bicolor Filter: Green/Brown	27
Bicolor Filter: Moss	26
Bicolor Filter: User Defined	28
Bicolor Filter: Violet/Pink	27
Brilliance/Warmth	20
Classical Blur	32
Color Stylizer	34
Contrast Filter: Blue	19
Contrast Filter: Cyan	19
Contrast Filter: Green	18
Contrast Filter: Magenta	19
Contrast Filter: Red	17

Contrast Filter: Yellow	18
Contrast Only	33
Darken Center	22
Duplex	29
Graduated 0h (Gray)	36
Graduated 201h (Sky Blue)	37
Graduated 213h (Dark Blue)	38
Graduated 220h (Blue)	39
Graduated 32h (Orange)	44
Graduated 355h (Red)	38
Graduated 33h (Coffee)	40
Graduated 354h (Blood)	41
Graduated 38h (Warm Yellow)	42
Graduated 51h (Yellow)	42
Graduated 94h (Moss)	43
Graduated User Defined	45
Ink	21
Lighten Center	23
Midnight (blue)	47
Midnight (green)	47
Midnight (sepia)	47
Midnight (violet)	47
Midnight	46
Monday Morning (blue)	49
Monday Morning (sepia)	49
Monday Morning (violet)	49
Monday Morning	48
Old Photo	35
Polarization	25
Skylight Filter	24
Sunshine(quick)	31
Sunshine	30

nik Abstract Efex Pro!	50
Infrared	54
Pastel	55
Pop Art	53
Remove Brightness	56
Saturation To Brightness	50
Solarization	52
Stairs	56
Weird Dreams	51
Weird Lines	55

Filter Index by filter symbol

 Polarization – 25	 Graduated: 0h (Gray) – 36	 Graduated 51h (Yellow) – 42
 Darken Center – 22	 Graduated 201h (Sky Blue) – 37	 Graduated 38h (Warm Yellow) – 42
 Lighten Center – 23	 Graduated 220h (Blue) – 39	 Graduated 32h (Orange) – 44
 Skylight – 24	 Graduated 213h (Dark Blue) – 38	
 Bicolor: Brown – 27	 Graduated User defined – 45	 B/W Conversion – 16
 Bicolor: Violet/Pink – 27	 Graduated 94h (Moss) – 43	 Contrast: Green – 18
 Bicolor: Green/Brown – 27	 Graduated 34h (Blood) – 39	 Contrast: Magenta – 19
 Bicolor: Moss – 26	 Graduated 335h (Red) – 38	 Contrast: Yellow – 18
 Bicolor: User Defined – 28	 Graduated 33h (Coffee) – 40	 Contrast: Blue – 19
		 Contrast: Red – 17
		 Contrast: Cyan – 19

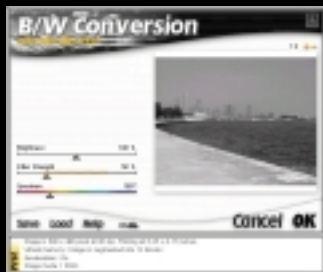
Filter icons with a dashed border indicate that the filter has a contrast effect – they are not intended to alter colors. Please note that filters not derived from conventional photography are not listed on this page. For a complete list, see the previous page.



nik Color Efex Pro! Overview

B/W Conversion

The B/W Conversion filter allows you to convert your color images to black



and white using a classical color filter similar to the one used in conventional photography. Placing a conventional colored glass filter in front of your black and white camera changes the contrasts dramatically. When using a red filter, for example, the blues in a sky scenery photo would be darkened dramatically, accentuating the clouds and making them more crisp.

The **Brightness** adjustment allows you to increase or decrease the overall brightness in cases where the filter darkens the image too much. This filter will only have an effect on color images and leaves grayscale images unaffected.



The **Filter Strength** slider defines the degree to which the filter will affect the final image.

The **Spectrum** slider defines the color of the filter you are using.



Contrast Filters

Contrast filters allow you to make use of the powerful contrast effects used in Black and White photography. With nik Color Efex Pro, however, you can apply these effects to color photos to attain unique contrasts. There are six contrast filters that cover the entire color spectrum: Red, Magenta, Blue, Cyan, Green, and Yellow. The Contrast Filter: Red, for example, will affect the contrast of the photo in just the same way as a red glass filter would when placed in front of a still camera, but without turning the image red. Each of the six contrast filters also allow the filter color used to be altered slightly within the filter dialog.

Contrast Filter: Red

The Contrast Filter: Red is probably the most popular contrast filter, as it darkens and dramatizes blue colors in the sky or blue water, and makes warm colors, such as those found in flowers and skin, brighter.

The **Brightness** adjustment allows you to increase or decrease the overall brightness in cases where the filter darkens the image too much.

The **Contrast** slider defines the degree to which the filter will affect the final image.

The **Spectrum** slider defines the color of the filter you are using.





Contrast Filter: Green

Although the Green Contrast filter is a color filter, its applications are unique. The Green filter intensifies warm colors such as orange, red, and violet, darkening and adding depth to these colors.



Contrast Filter: Green

Ideal for still and portrait photographs.

Contrast Filter: Yellow

The Yellow Contrast filter is applicable to various images, primarily landscape and nature photography.

Contrast Filter: Red

The Red Contrast filter is the most popular contrast filter, ideal for landscape photography. It is especially effective for intensifying the effect of clouds in a scenery photo.





The Contrast Filter: Magenta

The Cyan Contrast filter completes the color spectrum for this filter set. It is often used for stylizing and adding a cold feel to images.



Contrast Filter: Magenta

Ideal for many still photography applications.

Contrast Filter: Blue

The Blue Contrast filter can be used for darkening skin tones, either for extreme effects or to simulate a suntan in portraits.

Contrast Filter: Cyan

Various purposes.

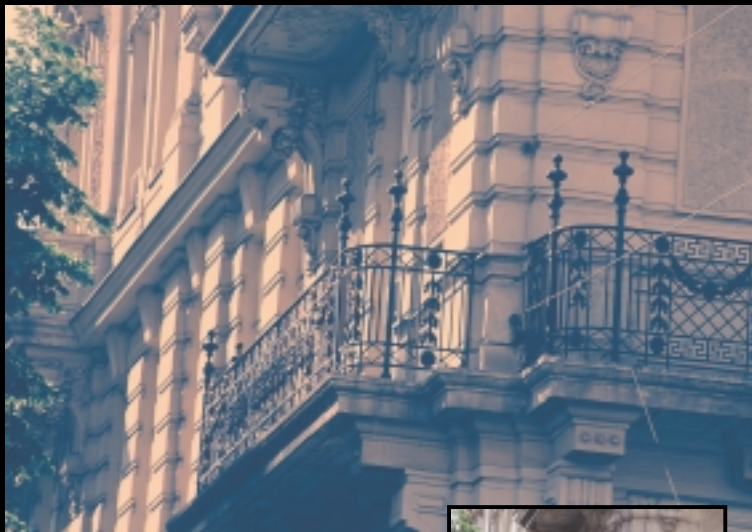
Brilliance/Warmth

The Brilliance/Warmth filter is designed to make colors in an image look more saturated and warm. Because nik Color Efex Pro uses an advanced color treatment system, increasing an image's saturation is different than increasing the saturation using Photoshop or other image-editing applications. Please refer to the section on Advanced Color Treatment - RGB, CMYK, and Lab for information on this feature. Note that images often look unnatural when the saturation (i. e., the Brilliance) is increased at all. In other words, the Brilliance/Warmth filter is a stylizing filter rather than a color-correcting filter. If you feel that your image is not colorful enough, try enhancing the image with other filters or tools, such as Photoshop's "Levels" command, or the nik Color Efex Pro Sunshine filter.

Brilliance: The Brilliance slider defines the saturation of the colors in the image.

Warmth: The Warmth slider enables you to give the colors either a colder or a warmer impression.





Ink

The Ink filter changes the color set in the image, making it appear as though it were printed on very old photo paper. This effect is unique to nik Color Efex and not easily created with standard image-editing tools. The Ink effect is ideal for making images abstract while maintaining the color and detail in the image.

Design Hint: The Ink filter is especially effective when applied uniformly across all images in a personal profile, corporate identity, or promotional brochure.

Color Set: This slider defines the colors used for this filter.

Strength: The Strength slider defines how much the colors in the image will change. Please note that the sample shown is a little bit overdone. Depending on your style, you may want to use lower Strength settings for this filter.



Darken Center

The Darken Center filter was designed to alter a common photographic effect. Because light reaches the margins of the negative to a lesser degree than the center, most images are brighter in the middle. The Darken Center filter alters this effect. This filter is especially useful when photographing flat objects, such as paintings, house-fronts, graffiti, etc.. As shown here in this sample, the effect creates a flat and two-dimensional impression, a desirable effect in cases such as these. (see the two door front photos on this page)

Distort: The Distort slider lets you control whether the dark area in the middle of the image is skewed horizontally (move slider left), vertically (right), or circular (leave it in the middle).

Filter Opacity: The Filter Opacity slider controls the intensity of the filter. Take care not to apply this filter too much.

Center Size: The Center Size adjustment controls the size of the center focus of the filter that will be darkened.





Lighten Center

The complement of Darken Center, the Lighten Center filter increases the natural effect created in analog photography, where most photos are brighter in the center than at their margins. Conventional photographic wisdom says that an image should have consistent luminance throughout a photo. However, the effect of lightening the center portion of an image can create a realistic, three-dimensional and even more dynamic effect. The Lighten Center filter is appropriate for landscape photos as well as for indoor photos where a three-dimensional effect is desirable.

Distort: The Distort slider lets you control whether the light area in the middle will be skewed horizontally (move slider left), vertically (move slider right), or circular (leave it in the middle).

Filter Opacity: The Filter Opacity slider controls the opacity of the filter. Take care not to apply this adjustment too much.

Center Size: The Center Size adjustment controls the size of the center focus of the filter that will be lightened.



Skylight Filter

The Skylight filter eliminates the blue shade that is often added to outdoor photos due to the blue sky. This filter removes some color obscurity that occurs resulting from UV light. Since UV information is not stored in digital image data, nik Color Efex Pro cannot entirely undo the UV influence. However, this version of the conventional filter does provide some color correction to the image.

Strength: The Strength slider only defines how much the effect is applied.





Polarization

Requests for a digital polarization filter rank among the top for additions to nik Color Efex filters. Simply put, a conventional polarization filter is a glass filter that filters certain light from an image creating different and often better colors and contrasts.

Creating an actual digital polarization filter is not an easy task; in fact, it borders on impossible, as applying a polarization filter to an image after it was taken is impossible. However, as a result of the many requests, we created the Polarization filter that combines an ensemble of routines and algorithms that, while they have absolutely nothing to do with actual polarization, manage to simulate the effect. One limitation of the nik Color Efex Pro Polarization filter is that cannot filter away surface reflections such as glare from glass or water.

Rotate Filter: This slider rotates the virtual filter, which leads to varying degrees of contrast.

Strength: The Strength slider lets you control how much this filter is applied.



Bicolor Filter: Moss

The Bicolor Moss filter is one of the Bicolor filters in the series that inks the image with one color at the top of the image and a different color at the bottom. The Bicolor Moss filter applies a gradient with two different green/turquoise hues to the image, providing a somewhat mean and rather sinister effect. Bicolor filters such as this provide a more pronounced effect when the original contains less saturated colors.

Rotate Horizon: The Rotate Horizon slider lets you tilt the filter either clockwise or counter-clockwise. Please Note: The default setting for the Rotate Horizon slider often provides an optimal setting for this slider.

Filter Opacity: The Filter Opacity slider defines the strength of this filter.

Shift Vertical: The Shift Vertical adjustment lets you push the entire filter up or down.

Blend: The Blend slider works similar to a blend adjustment in conventional photography. By altering the blend, you can create either a soft or a defined transition.





Bicolor Filter: Brown
Bicolor Filter: Violet/Pink
Bicolor Filter: Green/Brown

The three filters shown here are Bicolor filters similar to the Moss filter. Each of these pre-set filters creates a unique effect with pre-set colors, which have a variety of applications. If you want to create your own colors, try the filter "Bicolor: User defined", where you can choose two colors manually, or try the filter "Bicolor Filter: Standard", where you can choose a pair of colors from the nik Color Efex palette.

Rotate Horizon: This slider lets you tilt the filter clockwise or counter-clockwise. When experimenting with the rotation of the horizon you will find that any setting other than the horizontal default setting creates an unsettling effect in most photos.

Filter Opacity: Filter Opacity defines the strength of this filter.

Shift Vertical: The Shift Vertical parameter lets you push the entire filter up or down.

Blend: The Blend slider works similar to a blend adjustment in conventional photography. By altering the blend, you can create either a soft or a defined transition.





Bicolor Filter: User Defined

The Bicolor filter allows you to combine two colors to apply to an image. Be selective in the combinations you choose, since over saturated or non-complementary colors can create unsatisfying results.

Color 1: The Color 1 setting lets you define the color for the upper region of the image.

Color 2: The Color 2 setting lets you define the color for the lower region of the image.

Rotate Horizon: This slider lets you tilt the filter clockwise or counter-clockwise.

Filter Opacity: Filter Opacity defines the strength of this filter.

Shift Vertical: This parameter lets you push the entire filter up or down.

Blend: The Blend slider works similar to a blend adjustment in conventional photography. By altering the blend, you can create either a soft or a defined transition.





Duplex

The Duplex filter provides the effect of a duplex print while keeping the image in its original RGB or CMYK color mode. Users should remember that this filter does not create a print ready for the duplex print process. Since 99% of prints today are printed in CMYK, leaving the image in either RGB or CMYK allows you to create this effect while preparing your image for professional printing. For those unfamiliar with duplex prints, when experimenting with this filter, you will notice that the filter creates a stylized version of the original image, coloring it with a single hue.

Color: The Color parameter controls the color with which the image is inked.



Sunshine

The Sunshine filter is the most sophisticated in the Color Efex Pro array of filters. The powerful effects of the filter are controlled by a number of parameters, which adjust multiple light-casting algorithms. The Sunshine filter is ideal for adding sunlight to an indoor or outdoor photo where the original light settings were not optimal or not "brilliant" at the time the photo was taken. The Sunshine filter is not only effective when applied to images with insufficient light, it also is effective when used to brighten and enhance images, making a good image even better.

Note that in the sample on this page, the effect of the filter is not to brighten the entire image; rather, the filter enhanced the details, such as the grass, by intensifying the light cast in the original image. Shadows are maintained to an equal degree, while the lake's water becomes even darker. This effect is the result of setting the parameters optimally (including the prefilter, described on page 31). Setting parameters precisely is truly essential to optimal results. Because this filter is among the most complex and powerful in the collection, experience



using this filter on varying types of images is the key to optimizing or transforming an image. For quick additions of sunlight to an image, consider using the Sunshine (quick) filter discussed in the next section.

Note: If you have an image with a washed-out gray (or even white) sky, applying one of the Graduated filters (especially Graduated Blue 201h) will help make the sky a deeper blue. The Sunshine filter is designed to cast and enhance light and will not regenerate sky scenery that is gray or white.

Saturation Correction: The

Saturation Correction slider controls the correction of some colors in the image, especially bright ones. Be careful that this slider is not applied too much. Optimal setting for this parameter can vary extremely from image to image.

CCR Effect: The "Cold Color

Reduction Effect" makes the colors in an image appear warmer. Many images look appealing with a strong CCR Effect setting. However, be careful not to over-adjust this setting, as doing so will leave an image looking too "soft".

Light Casting Algorithm: The

Sunshine filter is capable of adding and casting light using several algorithms. Each collection of calculations has a different method for adding light to an image. Because images and their contents, colors, and detail vary widely, it is not possible to provide a "rule" for determining when to use which algorithm setting. However, setting "A" is the most common and can be used in most images to add light. Experiment with the other settings as well to establish the optimal setting for each image.

Sunlight Intensity: The Sunlight

Intensity setting adjusts the intensity of the added sunlight using the selected Light Casting Algorithm.

Radius: The Radius slider deter-

mines the light-glowing radius in the image, measured in pixels. In scenery that is glowing with light, some objects cast light off their surface and onto objects directly beneath them. This happens even more so from bright objects to dark surfaces. The Sunshine filter simulates this effect, but the filter needs an optimal setting for the image. One rule to try is to use 1/80 (or .0125) of the image's height or width as the Radius setting. Begin with this value and adjust it from there.

Prefilter: The Prefilter setting

applies one of a number of filtering routines to an image before applying the other settings. Before adding sunshine, the filter treats the image with one of several Prefilters. The Prefilter will change the image's contrast, affecting the way the sunlight appears when it is added. Please note that, although the Prefilters have names such as "landscape" and "portrait", the Prefilters can be applied to many types of images. The Prefilter names do not restrict the effective applications of the filters.

Prefilter Strength: The Prefilter Strength defines how strong the prefilter will be applied.

Sunshine (quick)

The Sunshine (quick) filter provides users with a quick alternative for adding light to images. The Sunshine (quick) filter has only two parameters to adjust, allowing users to alter the CCR Effect and Sunlight Intensity. This filter is optimal for catalog production and projects where many images may need some added light. This filter was designed to provide users with a limited number of adjustments in order to simplify consistent light applications to a number of photos. For more extensive light adjustments, use the full-featured Sunshine filter.

CCR Effect: The "Cold Color

Reduction Effect" makes the colors in an image appear warmer. Many images are effective with a strong CCR Effect setting. However, be careful not to over-adjust this setting, as doing so can leave an image looking too "soft".

Sunlight Intensity: The Sunlight

Intensity setting controls the intensity of the added sunlight.

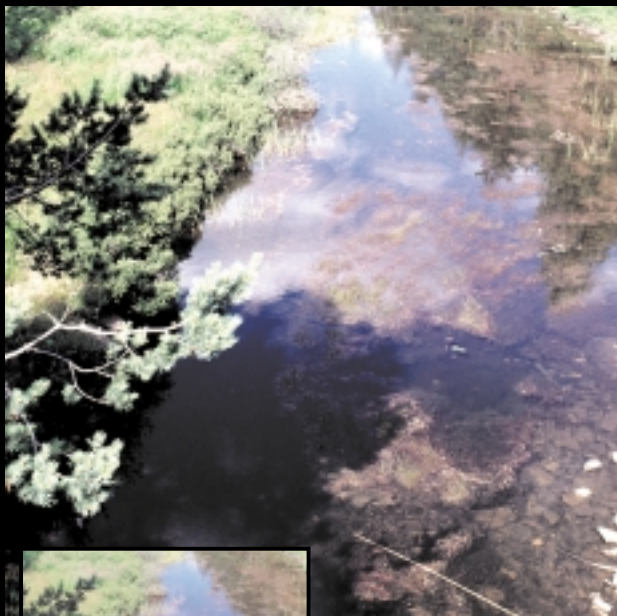


Classical Blur

The Classical Blur filter differs from the "Blur" filter used in conventional photography. The Classical Blur filter does not make the image entirely unsharp; rather, it provides a softer and "washed" look to the photo. This mood-creating filter is ideal for applications such as holiday and wedding photos. However, be careful when applying this filter, since over-applying it can easily degrade or completely wash out an image.

Strength: The Strength slider defines the strength of the blur effect.





Contrast Only

Just as the name implies, the Contrast Only filter alters only the contrast of an image. When making adjustments to contrast in an RGB or CMYK image, colors often change automatically as well. Many times, this effect is desirable. However, sometimes it is desirable to alter the contrast without changing the color saturation. The Contrast Only filter provides this option for photographers and designers. If you apply this filter with a strong setting, you will notice that a stylizing effect occurs. Experiment with this filter to expand your creative arsenal.

Contrast: The Contrast slider adjusts the contrast of the image.

Brightness: The Brightness slider allows you to adjust the brightness in the image. The default setting for this adjustment often provides the optimal setting.

Color Stylizer

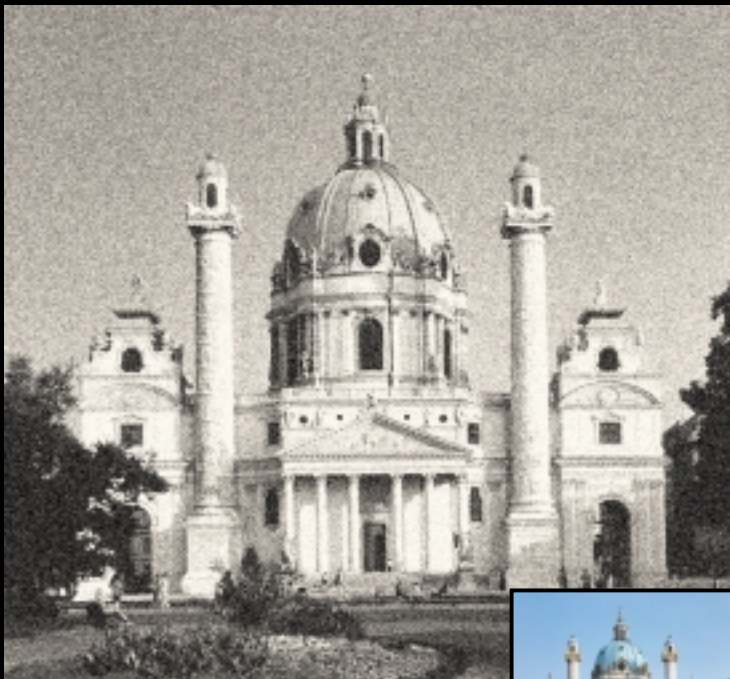
The Color Stylizer filter allows you to stylize your images using certain colors. The Color Stylizer inks the image with a single color. Although the image may appear to be monochrome, it is still a color image. In addition to color alteration, the Color Stylizer adjusts the contrast slightly to provide an added stylizing adjustment.

Color: The Color slider defines the color with which the image is inked.

Contrast: The Contrast slider defines how much the contrast is changed. This adjustment only affects the brightness channel in the image.

Saturation: The Saturation slider allows you to control the number of original colors that will remain in the final image.





Old Photo

With the Old Photo filter you can easily create antique photos with various stylized effects. The Old Photo filter transforms a color photo to an antique photo, providing varying degrees of effects for virtually any antique layout.

Brightness: The Brightness adjustment adjusts the overall brightness in the image.

Grain: The Grain slider controls the amount of grain in the photo.

Paper Color: The Paper Color slider simulates different photo paper colors, allowing you to control the paper color, from a cold blue to a warm yellow. When adjusting this slider, be careful not to over-colorize the image. In this application, less is more.

Contrast: The Contrast adjustment lets you control the contrast of the image, provided you choose one of the three channels via the Use Channel slider.

Use Channel: The Use Channel slider allows you to choose whether you want to mix one of the Red, Green, or Blue channels into the contrast, or you want to use the existing channels as originally set in the color image.



Graduated 0h (Gray)

This first filter in the Graduated series is useful for darkening the sky in a scenery photo. The Graduated 0h (Gray) filter in conventional photography is used to make the sky darker. Please note that the nik Color Efex Pro 0h (Gray) digital filter always creates a gray effect, unlike the analogous gray filter from classical photography, which sometimes makes a pale blue sky more saturated.

Rotate Horizon: The Rotate Horizon slider lets you tilt the filter clockwise or counter-clockwise. The default setting for this slider is in most cases the optimal setting. Keep this in mind when experimenting with this adjustment.

Filter Opacity: The Filter Opacity adjustment defines the overall strength of this filter.

Shift Vertical: The Shift Vertical parameter lets you adjust the entire filter up or down.

Blend: The Blend adjustment works the same as in conventional photography. By altering the blend within the image, you can define color transition from gradual to abrupt.





Graduated 201h (Sky Blue)

The Graduated: 201h (Sky Blue) filter colors the upper portion of the image with a pronounced blue. This filter is ideal for re-coloring a gray sky. This filter should not be confused with the "Graduated 220h (Blue)" which, while it comes close to the 201h (Sky Blue), the 220h filter is not optimized for re-coloring the sky. For re-establishing a sky blue color, use the Graduated: 201h (Sky Blue) filter.

Rotate Horizon: The Rotate Horizon slider lets you tilt the filter clockwise or counter-clockwise. The default setting for this slider is in most cases the optimal setting. Keep this in mind when experimenting with this adjustment.

Filter Opacity: Filter Opacity defines the strength of this filter.

Shift Vertical: The Shift Vertical parameter lets you adjust the entire filter up or down.

Blend: The Blend adjustment works the same as in conventional photography. By altering the blend within the image, you can define color transition from gradual to abrupt.





Graduated 213h (Dark Blue)

The Graduated 213h (Dark Blue) filter provides a graduated dark blue effect, ideal for creating a stylized and somewhat sinister image. This filter is suitable for changing the mood of a photo or for creating a surreal effect.

Rotate Horizon: The Rotate Horizon slider lets you tilt the filter clockwise or counter-clockwise. The default setting for this slider is in most cases the optimal setting. Keep this in mind when experimenting with this adjustment.

Filter Opacity: Filter Opacity defines the strength of this filter.

Shift Vertical: The Shift Vertical parameter lets you adjust the entire filter up or down.

Blend: The Blend adjustment works the same as in conventional photography. By altering the blend within the image, you can define color transition from gradual to abrupt.





Graduated 220h (Blue) **Graduated 355h (Red)**

The Graduated filters 220h (Blue) and 355h (Red) are provided for stylistic enhancements. Like the other Graduated filters, these two filters color the upper portion of the image with the specified color. Unlike filters such as the Graduated 201h (Sky Blue), these two filters were not designed with a specific enhancement in mind. Rather, the 220h (Blue) and 355h (Red) provide added color variety within the Graduated filter series.

Rotate Horizon: The Rotate Horizon slider lets you tilt the filter clockwise or counter-clockwise. The default setting for this slider is in most cases the optimal setting. Keep this in mind when experimenting with this adjustment.

Filter Opacity: Filter Opacity defines the strength of this filter.

Shift Vertical: The Shift Vertical parameter lets you adjust the entire filter up or down.

Blend: The Blend adjustment works the same as in conventional photography. By altering the blend within the image, you can define color transition from gradual to abrupt.





Graduated 33h (Coffee)

The Graduated 33h (Coffee) filter inks the upper portion of the image in a coffee-brown color. The effect of this filter depends greatly on the target image. Try combining the 33h (Coffee) filter with other dark filters to create a stylized, sinister effect.

Rotate Horizon: The Rotate Horizon slider lets you tilt the filter clockwise or counter-clockwise. The default setting for this slider is in most cases the optimal setting. Keep this in mind when experimenting with this adjustment.

Filter Opacity: Filter Opacity defines the strength of this filter.

Shift Vertical: The Shift Vertical parameter lets you adjust the entire filter up or down.

Blend: The Blend adjustment works the same as in conventional photography. By altering the blend within the image, you can define color transition from gradual to abrupt.





Graduated 354h (Blood)

This filter's effect is similar to the Graduated 33h (Coffee) filter. The use of a deep, blood red creates startling effects in landscapes. Try applying it to create an ominous sky or a stylized sunset.

Rotate Horizon: The Rotate Horizon slider lets you tilt the filter clockwise or counter-clockwise. The default setting for this slider is in most cases the optimal setting. Keep this in mind when experimenting with this adjustment.

Filter Opacity: Filter Opacity defines the strength of this filter.

Shift Vertical: The Shift Vertical parameter lets you adjust the entire filter up or down.

Blend: The Blend adjustment works the same as in conventional photography. By altering the blend within the image, you can define color transition from gradual to abrupt.





Graduated 38h (Warm Yellow) Graduated 51h (Yellow)

The Graduated: 38h (Warm Yellow) filter inks the upper portion of the image in a warm yellow color. This filter brings out yellows in the image (see photos to the right) and is ideal for creating a soft, romantic look. The Graduated: 51h (Yellow) filter inks the upper portion of the image in a basic, universal yellow, similar to the filters 220h (Blue) and 355h (Red).

Rotate Horizon: The Rotate Horizon slider lets you tilt the filter clockwise or counter-clockwise. The default setting for this slider is in most cases the optimal setting. Keep this in mind when experimenting with this adjustment.

Filter Opacity: Filter Opacity defines the strength of this filter.

Shift Vertical: The Shift Vertical parameter lets you adjust the entire filter up or down.

Blend: The Blend adjustment works the same as in conventional photography. By altering the blend within the image, you can define color transition from gradual to abrupt.





Graduated 94h (Moss)

The Graduated 94h (Moss) filter tints the upper portion of the image in a moss green color. This filter is ideal for creating an eerie effect in landscapes. The Graduated: 94h (Moss) can also be used as a stylizing tool to create odd and surreal colors.

Rotate Horizon: The Rotate Horizon slider lets you tilt the filter clockwise or counter-clockwise. The default setting for this slider is in most cases the optimal setting. Keep this in mind when experimenting with this adjustment.

Filter Opacity: Filter Opacity defines the strength of this filter.

Shift Vertical: The Shift Vertical parameter lets you adjust the entire filter up or down.

Blend: The Blend adjustment works the same as in conventional photography. By altering the blend within the image, you can define color transition from gradual to abrupt.





Graduated 32h (Orange)

The Graduated: 32h (Orange) filter inks the upper portion in a shaded orange color. As shown in the photo to the right, this filter can be applied to landscape photos and is also ideal for cityscapes and indoor images to create a somewhat romantic feel. In some images, the Graduated 32h (Orange) can be used to produce the colors of a sunset.

Rotate Horizon: The Rotate Horizon slider lets you tilt the filter clockwise or counter-clockwise. The default setting for this slider is in most cases the optimal setting. Keep this in mind when experimenting with this adjustment.

Filter Opacity: Filter Opacity defines the strength of this filter.

Shift Vertical: The Shift Vertical parameter lets you adjust the entire filter up or down.

Blend: The Blend adjustment works the same as in conventional photography. By altering the blend within the image, you can define color transition from gradual to abrupt.



Graduated User Defined

The user-defined option in the Graduated series provides you with several options for creating colors. With the Graduated User Defined filter, you can select any color from a color selection screen. Although this filter does allow you to choose from a number of colors, consider that the pre-set graduated color filters were selected to provide a maximum range of applicability for most images.

Color: The Color setting allows you to set the filter color. Click on one of the predefined colors and a window will open where you can define a color.

Rotate Horizon: The Rotate Horizon slider lets you tilt the filter clockwise or counter-clockwise. The default setting for this slider is in most cases the optimal setting. Keep this in mind when experimenting with this adjustment.

Filter Opacity: Filter Opacity defines the strength of this filter.

Shift Vertical: The Shift Vertical parameter lets you adjust the entire filter up or down.

Blend: The Blend adjustment works the same as in conventional photography. By altering the blend within the image, you can define color transition from gradual to abrupt.



The Midnight Filters

The Midnight filters series is a collection of stylizing filters that creates a variety of stylizing and mood effects. In its most popular application, Midnight filters create a day-for-night effect, creating the illusion that a photo taken in daylight was taken at night. The advantage of using the Midnight filter in this application is its ability to control light through the application of color. Combinations of these filters create dark and sinister moods in a photo. There are five filters in the Midnight filter series: Midnight, shown to the right, Midnight (blue), Midnight (sepia), Midnight (violet), and Midnight (green), which is shown on the next page.

The Midnight filters are ideal to combine with other filters in the nik Color Efex Pro collection. The Midnight and Midnight (blue) filters together create a stylized day-for-night effect. Adding the Lighten Center filter can add depth to a day-for-night scenery photo.





Color: The Color slider determines how intense the indicated color will be applied in the image. Consider using a lower Color setting to achieve a more realistic midnight effect

Blur: The Blur slider allows you to alter the degree to which the image contains a "washed" look.

Brightness: The Brightness slider determines the overall brightness in the image.

The Monday Morning Filters

The Monday Morning filter series is a collection of four mood filters. These filters are not intended to create images to look like a Monday morning. Instead they are designed to create a look as people feel on a Monday morning - cool, uncomfortable and even a little sleepy. Just as with the Midnight series, there is one filter that uses a "normal" color setting and three other filters that use colors with specified hues.

Grain: The Grain slider controls the amount of grain in the photo.

Brightness: The Brightness adjustment controls the overall brightness in the image.

Smear: The Smear slider controls blur in the image.

Color: The Color slider defines the saturation of the image. Please note that in the three colored filters, this slider will also adjust the intensity of the added color.





Monday Morning (sepia)



Monday Morning (violet)



Monday Morning (blue)

nik Abstract Efex Pro!

Saturation To Brightness

The Saturation to Brightness filter extracts the Saturation of each pixel and replaces each pixel's luminance with the saturation. The Saturation to Brightness filter is not designed to enhance your photos in a conventional manner, but rather to intensify the colors of the target image with the result that even the faintest colors in a photo can be brought out and intensified. Applications for this filter are very broad and include any image that contains a variety of colors. Using this filter on photos with little color variation often leads to less impressive changes.

Brightness The Brightness slider controls the brightness of the image.

Saturation The Saturation slider lets you control the brilliance of the image's colors. Creative Hint: With this adjustment, less is often more.

Nudge Colors The Nudge Colors slider lets you move the colors about, enabling more interesting effects.





Weird Dreams

The **Weird Dreams** filter creates a somewhat bizarre and often dazzling pattern from your image. This artistic effect distorts the original image and creates a brilliant surreal version of the original. Use this filter in conjunction with other filters to obtain surprising effects. The sample shown here was created with both "Weird Dreams" and various Graduated filters.

Size: The Size slider controls the size of the lines that will appear.

Color Set: The Color Set slider lets you choose the color set used in the filter.

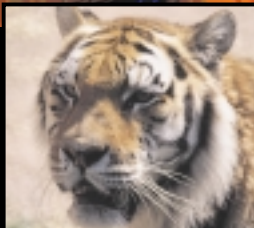
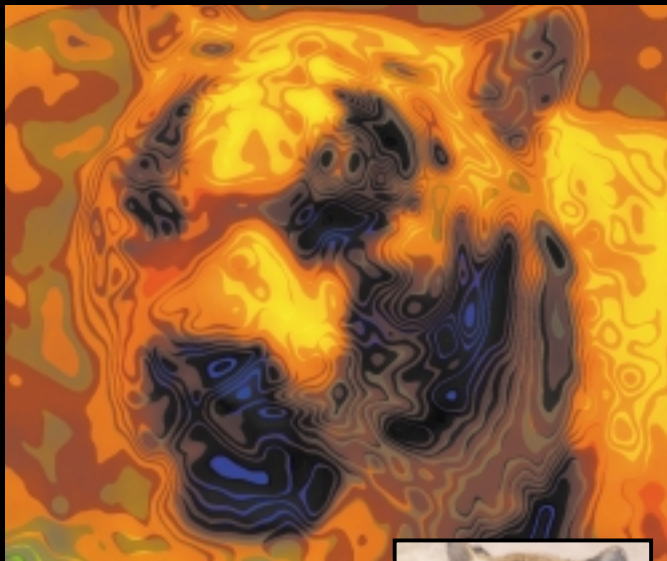
Solarization

The nik Color Efex Pro Solarization filter provides unique options for Solarization. Unlike other Solarization filters found in image-editing software, the nik Color Efex Pro filter changes the luminance and the density of the image. Offering multiple methods of Solarization, it can be applied not just to the image itself, but also to its brightness. In the darkroom, Solarization is an inexact, trial and error process. With the nik Color Efex Pro Solarization filter, you can control the time the image is "exposed to light" with a slider.

Method: The Method parameter defines which one of the six methods is used for Solarization.

Elapsed Time: The Elapsed Time slider defines the amount of time the image would be exposed to light in the conventional Solarization process.





Pop Art

The Pop Art filter uses an abstract line-filtering process to transform the colors and structure of the image. The final result can be varied by adjusting the color slider to change the color intensity within the image pattern.

Saturation: The Saturation slider lets you control the brilliance of the image's colors. Creative Hint: With this adjustment, less is often more.

Brightness: The Brightness slider allows you to adjust the brightness in the image. The default setting for this adjustment often provides the optimal setting.

Size: The Size slider defines the size of the details in the image. This adjustment should be set to a low value when used with small images, and a high value with large images.

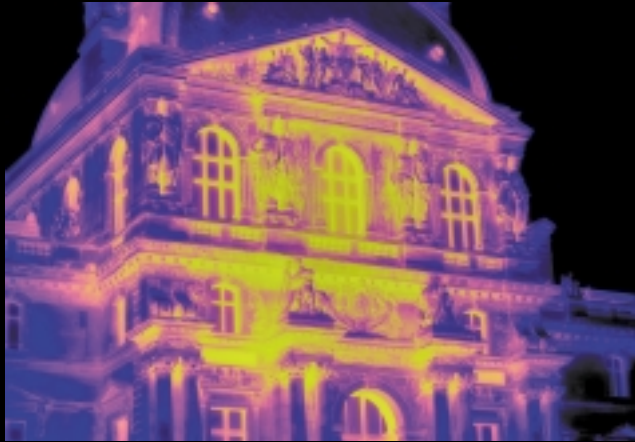
Infrared

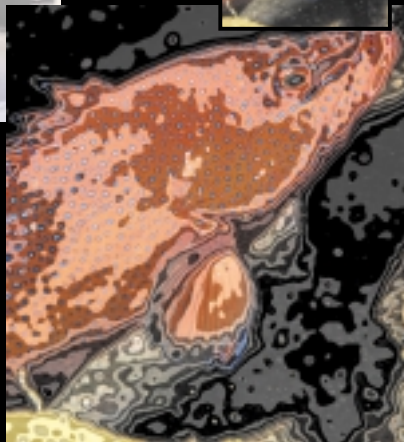
The Infrared filter simulates the view through a thermal camera – a camera that is capable of deciphering the warmth in an image via color. Thermal effects provide stylizing options for design, but are difficult to create. While the Infrared filter only simulates the view through an infrared camera, it nevertheless allows users to produce a good simulation that can be adjusted using the sliders.

Center Size: The Center Size slider adjusts the center focus of the image.

Blur: The Blur slider lets you control how much the bright (warm) areas of the image will glow in the areas beneath these brighter areas.

Color: With the Color slider, you can change the overall warmth/color calibration. To obtain the most realistic effect, try choosing a setting where some yellow is visible.





Pastel

The Pastel filter is ideal for creating what we like to call a "nostalgic innocence". This effect can be used to soften a foreground image or to softly white out a background image. Using the adjustments with this filter also allows you to create a soft, "clean" look.

Blend: The Blend slider defines the blend of the effect throughout the detail in the image.

Contrast: The Contrast slider controls the overall contrast of the image.

Brightness: The Brightness slider lets you control the overall luminance of the image.

Weird Lines

Weird Lines is among the more abstract filters. This filter incorporates odd spots and lines into the image to create an abstract effect.

Contrast: The Contrast adjustment defines the strength of the lines.

Size: The Size slider controls the size of the lines that will appear.

Number of Lines: The Number of Lines adjustment sets the number of lines that will appear.

Stairs

The Stairs filter (upper image) applies a stair-stepping effect to an image over its luminosity, while making adjustments based on the individual colors of the image. The Stairs filter creates rather impressionistic and colorful images.

Contrast: The Contrast slider defines the overall image contrast.

Stair-Size: The Stair Size slider defines the frequency and size of the stair-stepping effect.

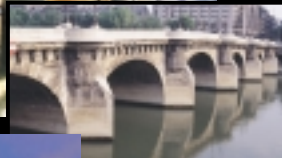
Color: The Color slider defines the saturation of the image.

Remove Brightness

The Remove Brightness filter provides a very simple but useful effect: It removes each pixel's brightness, so that each pixel has the same degree of luminance.

Saturation: The Saturation slider controls the image's overall saturation.

Brightness: The Brightness slider allows you to adjust the brightness in the image.





dot@tech-nik.com

Nothing is easier than to express something simple in a complicated manner. But to express something complicated simply is much more complicated.

(Translated and adapted from Karl Heinrich Waggerl, 1897 - 1973; Austrian Author)



TECHnik USA

The TECHnik Group
6549 Mission Gorge Rd. #220
San Diego, CA 92120
U. S. A.
Phone: (619) 562 - 4456
Fax: (619) 562 - 5583
E-mail: infous@tech-nik.com



TECHnik Europe

HIGH PERFORMANCE GmbH
Wendenstraße 130
D-20537 Hamburg
Germany
Phone: + 49 - 40 - 25 40 48 - 0
Fax: + 49 - 40 - 25 40 48 - 40
E-Mail: infoeu@tech-nik.com

nik multimedia software is
produced and distributed exclusively by
The TECHnik Group.



<http://www.tech-nik.com>

